

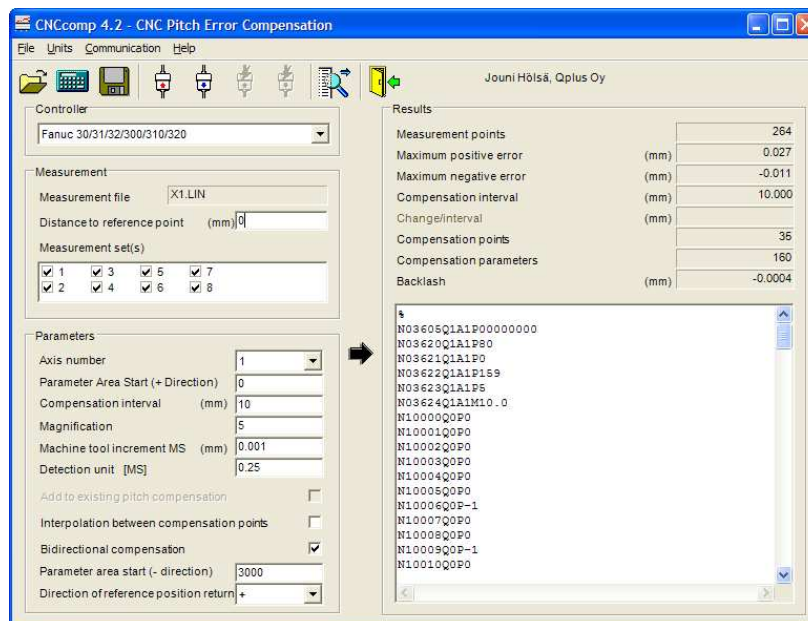
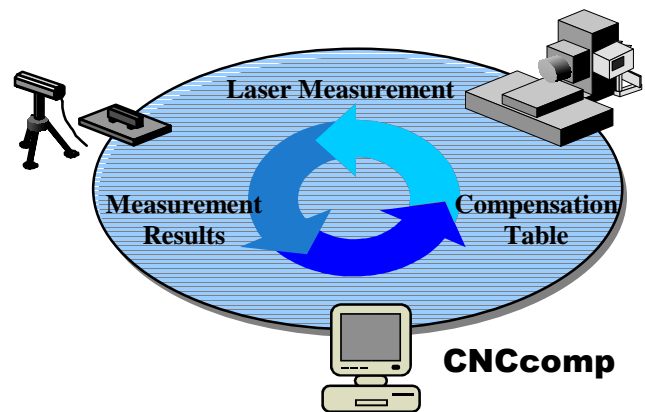
CNCcomp 4.4

CNC pitch compensation program

CNCcomp creates compensation tables for numerical controllers accurately, easily and fast. It calculates pitch error compensation table for a CNC based on Agilent, Jenaer, Optodyne or Renishaw laser-interferometer and Heidenhain VM182 measurement. The compensation table can be transferred to the controller either by the internal RS232 functionality of CNCcomp or by using an external DNC system. Program runs in Windows 2000/XP with Microsoft .NET Framework, and it is shipped with a comprehensive on-line help and a multi-language user interface.

Functionality

The program first reads in a laser-interferometer measurement, it calculates new compensation table, writes out an NC-program or a text file containing the compensation table and then sends the file to a controller. After the new compensation table is transferred to the numerical controller, it can be activated and the user can perform a verification measurement.





Features

Measurement file formats

CNCcomp supports Agilent 5529A (former HP), Jenaer ZLM, Optodyne, Renishaw ML10, Heidenhain VM182 and tabular text file formats. Support of other formats can be arranged upon request.

Controllers

CNCcomp 4.4 supports Fanuc series 0x, 10x/11x/12x, 15, 16x/18x/21x and 30x/31x/32x, Siemens 800, 840D, Heidenhain TNC426/430/iTNC530, ND221B/231B/281B, ND720/760 and Beckhoff TwinCAT CNC.

Automatic transmission and activation

For Heidenhain ND units, parameter files and compensation files can be automatically transmitted with a single click of a toolbar button. Compensation is *fast* and *easy*.

Data transmission via RS232

For all controllers, compensation tables can be transmitted between PC and NC controllers using RS232 functionality of CNCcomp.

Support of both metric and inch systems

Measurement units can be converted from metric to inches and vice versa.

Cumulative compensation

It is possible to compensate cumulatively to the old compensation values. In this case, there is no need to clear compensations in the control before a measurement, and *more accurate* positioning results can be achieved *faster*.

Bi-directional compensation

Fanuc 16, 18, 30 series and Beckhoff TwinCAT CNC support bi-directional pitch error compensation. This makes it possible to compensate uneven backlash and thus get a considerably *more accurate* machine tool.

Multiple language support

CNCcomp 4.4 supports English, German, Simplified Chinese and Traditional Chinese languages. Support of other languages can be arranged upon request.

Easy to use

The operations of CNCcomp are straight forward. With the assistance of embedded help file, a user can make productive use of CNCcomp within an hour.

Evaluation Copy

A 60-day evaluation copy of CNCcomp 4.4 can be downloaded from Qplus web site at <http://www.qplus.fi/cnccomp>

User Support

Software includes an on-line help explaining procedure with each controller in detail. Customers can contact our support either by email, phone or fax. The license fee also includes free on-line product updates of one year.